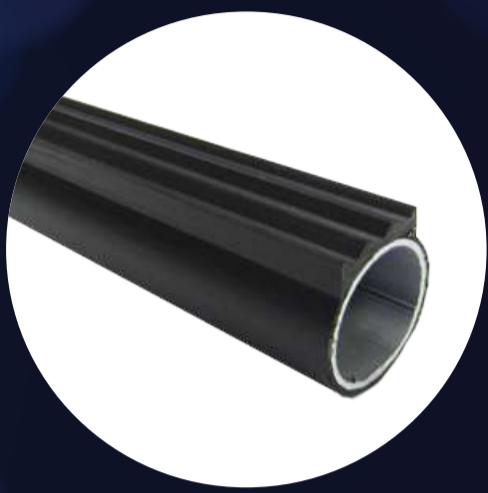


Happy New Year

# Pipes

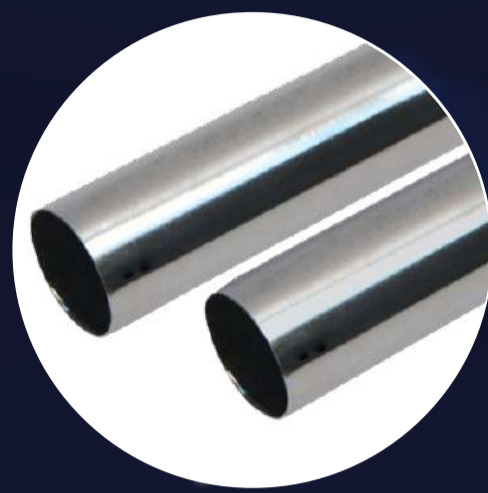
ESD Plastic Coated Pipe, Flat, Black



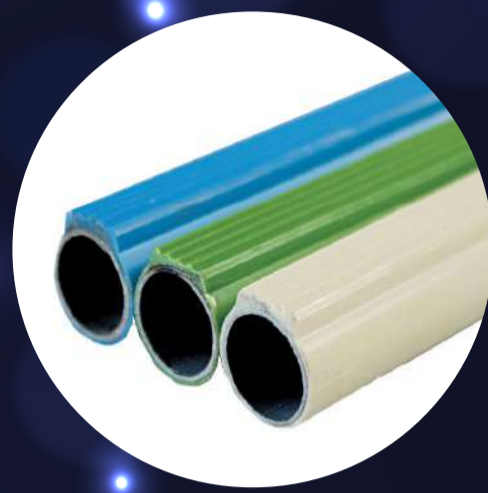
ABS Plastic Coated Pipe



SS Nico Pipe



ABS Plastic Coated Slide Pipe



ESD Black Coated Pipe

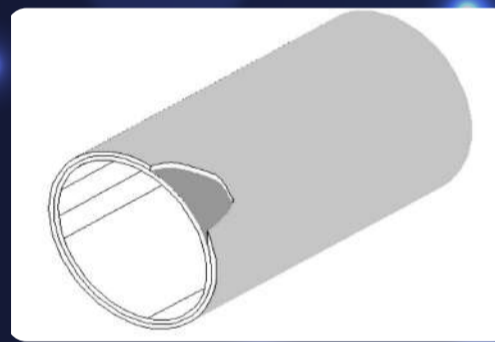


## Specifications

Part Number	Type	Ø	Color	Weight	Length	HV
KW101-28FL-ESD	Slide ESD Pipe	28	Black	770g/m	4m	90
KW101-28Ivory	Coated Pipe	28	IV, BL, GY	700g/m	4m	90
KW101-28RN.07	SS Pipe	28	Silver	460g/m	4m	210
KW101-28RN.08	SS Pipe	28	Silver	520g/m	4m	210
KW101-28RN1.0	SS Pipe	28	Silver	755g/m	4m	210
KW101-28RN1.2	SS Pipe	28	Silver	780g/m	4m	210
KW101-28FL	Slide Pipe	28	IV, BL, GY	770g/m	4m	90
KW101-28BK-ESD	Coated ESD Pipe	28	Black	700g/m	4m	90

### Benefits of SS Nico Pipe

- 1) 100% Recyclable
- 2) High Strength and Durability
- 3) Oil and Chemical Resistance
- 4) Suitable for Cleanroom Apps
- 5) Conductive

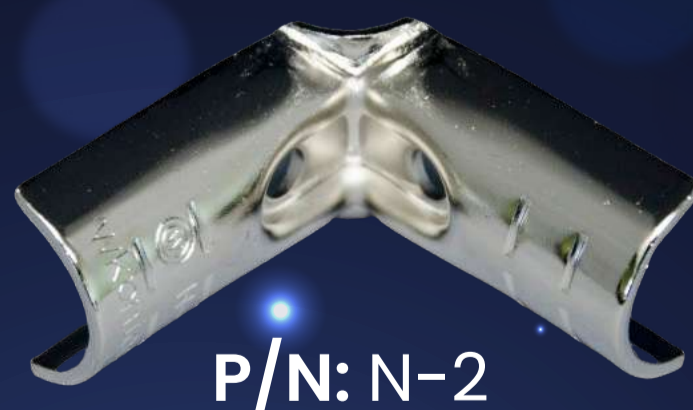
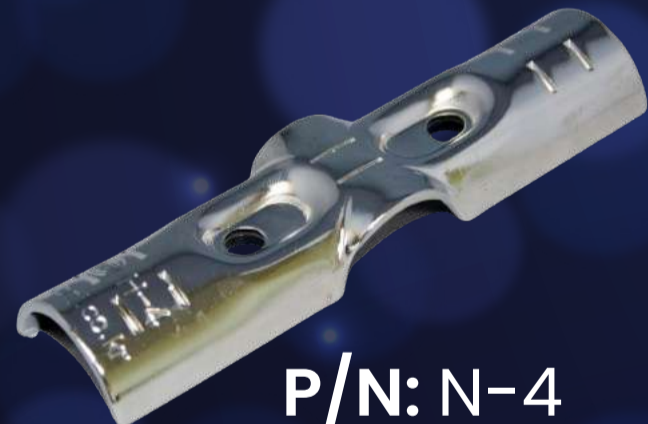


### Benefits of Coated Pipe

- 1) Various Colors Available
- 2) Chemical Resistance
- 3) Economical
- 4) Excellent Durability
- 5) ESD in Black Color



# Metal Connectors



### Description

Conductive Metal & Black Coated Metal Connectors for 28mm Pipe

### Specifications

Material	SPCC-1 (2.6t)
Weight	275g/ea AVG
Plating	Nickel/ Zinc/ Black

**ALIMEX ELECTRONICS**  
S. A. D E C. V.